

APY1501

(471579) October/November 2011

**THE ANTHROPOLOGICAL STUDY OF CULTURE IN A MULTICULTURAL
CONTEXT (ANTHROPOLOGY)**

Duration 2 Hours

60 Marks

EXAMINERS :

FIRST

SECOND

MR GH MAREE

PROF S HERSELMAN

This examination question paper remains the property of the University of South Africa and may not be removed from the examination venue.

This paper consists of 13 pages PLUS instructions for the completion of a mark reading sheet

**PLEASE COMPLETE THE ATTENDANCE REGISTER ON THE BACK PAGE, TEAR OFF AND
HAND TO THE INVIGILATOR.**

- 1 Answer **ALL** the questions **FILL IN YOUR ANSWERS ON THE MARK READING SHEET**
- 2 **ONLY ONE** option per multiple-choice question must be selected **NO MARKS** will be given if more than one option is included in an answer
- 3 All multiple-choice questions count **ONE MARK PER QUESTION.**

QUESTION 1

An important difference between anthropology and other human sciences is that anthropology

- 1 originated from an interest in non-western societies
- 2 is specifically interested in the working of the human mind and the informal acquisition of knowledge
- 3 studies human societies of prehistoric as well as historic times.
- 4 is concerned with the totality of human existence

QUESTION 2

Choose the **INCORRECT** statement

Linguistic anthropologists

- 1 initially studied the historical development of unwritten languages of non-western societies
- 2 study societies to gain an understanding of how cultural phenomena are expressed verbally
- 3 mainly focus attention on the evolution of languages in prehistorical societies
- 4 study the way in which language is used in different social contexts

[TURN OVER]

QUESTION 3**Sociocultural anthropologists study**

- 1 the influence of biological factors on behaviour in a human population
- 2 the relation between language and other aspects of people's lives
- 3 relations between people in terms of culture
- 4 the physical adaptation of humans to their natural environment

QUESTION 4

Which anthropological subfield focuses on the material culture of past societies?

- 1 Physical anthropology
- 2 Archaeology
- 3 Linguistics
- 4 Sociocultural anthropology

QUESTION 5From the options below, select the term that **CORRECTLY** completes the following statement

The term _____ refers to both the process and the product of fieldwork

- 1 etic description
- 2 enculturation
- 3 ethnography
- 4 ethnocentrism

QUESTION 6If an excessively **cultural relativistic** approach is followed in anthropology

- 1 cultural practices that have a harmful impact on a society may not be questioned
- 2 the researcher might adopt an **ethnocentric** approach to the study of people
- 3 statistical data relevant to an investigation might be misinterpreted
- 4 the researcher's beliefs may influence the results of his/her investigation

QUESTION 7

Anthropological information that has been collected by means of the ethnographic method will be

- regarded as a more meaningful and accurate representation of peoples' sociocultural systems when an anthropologist has

- 1 representative statistical surveys that verify the information
- 2 made systematic and relevant cross-cultural comparisons of the information
- 3 interviewed a number of informants and has participated in relevant cultural activities
- 4 applied the emic and etic research approaches during his/her fieldwork

QUESTION 8In terms of the **holistic approach** to the study of human beings, anthropologists are required to

- 1 take the whole context of a particular human group into account
- 2 construct an overall picture of the development of culture
- 3 obtain a balanced view of the life of a society
- 4 draw generalisations about the entire human condition

[TURN OVER]

QUESTION 9

When a custom or religious conviction is **understood and described within the cultural context in which it is found**, anthropologists refer to such a perspective as

- 1 ethnocentric
- 2 culturally relativistic
- 3 multivocal
- 4 reflexive

QUESTION 10

The anthropological approach that sees the people being studied as actors in their own cultural context, and incorporates people's own perceptions and categorising of the world in which they are living, is known as the

- 1 emic approach
- 2 etic approach
- 3 ethnic approach
- 4 ethnocentric approach

QUESTION 11

Which one of the following combinations pertaining to anthropological method and explanation has been linked **CORRECTLY**?

1	Social network analysis	The questioning of informants about relatives to reconstruct family histories
2	Genealogical method	The tracing of social relations within a community
3	In-depth interviewing	The gathering of information mainly through quantitative strategies
4	Participant observation	The immersion of the researcher in the daily lives of the people being studied

QUESTION 12

Anthropologists **MAINLY** gather information about the people they study by means of

- 1 questionnaires
- 2 surveys
- 3 social network analyses
- 4 in-depth interviewing of informants

QUESTION 13 

Africa is currently failing to produce enough food to feed its own populations. Problems associated with and reasons for this failure which have been identified, include all of the following **EXCEPT** a

- 1 lack of proper leadership
- 2 widening gap between the rich and the poor
- 3 need for constitutional reform
- 4 lack of training among subsistence farmers regarding improved crop production

[TURN OVER]

QUESTION 14

Which one of the following **best** describes anthropology as a comprehensive discipline?

- 1 A study of human cultural diversity worldwide
- 2 A study of human biological diversity worldwide
- 3 A humanistic study of human diversity worldwide and throughout time
- 4 A study of human diversity worldwide and throughout time

QUESTION 15

The hominid line includes

- a australopithecines
- b tarsiers
- c Homo habilis
- d Homo sapiens
- e lemurs

Choose the **correct** combination

- 1 b, c, d and e
- 2 c and d
- 3 a, b, c, d and e
- 4 a, c and d
- 5 a, b and e

QUESTION 16

From the options below, select the species that **CORRECTLY** complete(s) the following statement

The species _____ developed speech and language, marriage and family life

- 1 Homo sapiens
- 2 Homo erectus
- 3 Hominoids
- 4 Hominids
- 5 1 and 2

QUESTION 17

Which of the following species used stone tools?

- a Homo habilis
- b Australopithecus afarensis
- c Homo erectus
- d Homo sapiens

Choose the **correct** combination

- 1 a, b, c and d
- 2 a, c and d
- 3 c and d
- 4 b
- 5 a and b

[TURN OVER]

QUESTION 18

Anthropologists generally agree that the concept of a **race**

- 1 comprises a human population differing geographically, morphologically or genetically from other human populations
- 2 cannot be defined biologically and regard perceptions of race as sociocultural constructions
- 3 comprises a human population within which the genetic variation is less than the genetic variation between the population and other human populations
- 4 explains the innate behavioural characteristics which are attributed to various human populations

QUESTION 19

Which one of the following statements about **images and perceptions** of the body is **CORRECT**?

- 1 Tattooing is used universally to signify status and prestige
- 2 The increasing objectification of male bodies is indicative of a shift in the sociocultural ideal of beauty from women to men
- 3 Human bodies are shaped by their sociocultural systems and contexts
- 4 Circumcision is universally performed as a ritual which symbolically transforms boys into men

QUESTION 20

Which one of the following statements about **female genital mutilation** is **CORRECT**?

- 1 Genital cutting is done to enhance the sexual pleasure of the women
- 2 The practice is often enforced by women in an attempt to control the perceived rampant sexual desires of women
- 3 The practice occurs particularly among African Christians
- 4 Genital cutting is universally condemned as an infringement of universal human rights

QUESTION 21

Apparently **clitoridectomy** is still practised by

- 1 Tsonga communities in Mozambique
- 2 Zulu communities in KwaZulu-Natal
- 3 Southern Sotho communities in the Free State Province
- 4 Venda communities in Limpopo Province

QUESTION 22

According to **Dan Brown**, which of the following body modifications represents a **rite of passage** shared by millions of people in the modern age?

- 1 Female genital mutilation
- 2 Tattooing
- 3 Body piercing
- 4 Dieting

QUESTION 23

Which one of the following statements regarding **the construction of individual and group identities** is **CORRECT**?

- 1 Identity is not a static category but a continuous process and more accurately could be called identification
- 2 "Politics of identity" refers to a process through which a government attempts to mould ethnic identities into relatively fixed frames so that they can act politically
- 3 "Identity politics" refers to a process in which ethnic and racial identities contest the structures of power that constrain them
- 4 The construction of gender identity universally is based on genital anatomy

[TURN OVER]

OCTOBER/NOVEMBER 2011

QUESTION 24Which one of the following statements regarding **body language** is **CORRECT**?

- 1 The study of people's perceptions and use of space is known as kinesics
- 2 Nonverbal signals complement spoken messages and thus cannot contradict such messages
- 3 Nonverbal signals are not universally the same and therefore one cannot make generalisations about body language applicable to all societies
- 4 It is said that at least 90% of verbal communication is transmitted by body language and tone of voice

QUESTION 25The concept of **integration of culture** refers to

- 1 the process whereby individuals learn the culture of their society
- 2 a degree of uniformity in the behaviour of members of a society
- 3 cultural components which are interdependent and form a coherent whole
- 4 dynamic relationships which exist between sociocultural phenomena

QUESTION 26

Humans are set apart from animals on the basis that they, in contrast to animals,

- 1 use tools to adapt to their environment
- 2 have the ability to communicate symbolically
- 3 must be taught how to behave
- 4 share their behaviour with members of their group

QUESTION 27Which of the following cultural phenomena **is/are a key signifier or marker** of ethnic identity?

- 1 Language
- 2 Art
- 3 Food
- 4 Clothes

QUESTION 28

The appointment or recognition of a leader or an authoritative body which makes rules and laws and which is accepted and obeyed gives rise to a community's

- 1 social system
- 2 legal system
- 3 political system
- 4 military system

QUESTION 29Which of the following may be used to distinguish an **ethnic group**?

- a A common genetic basis
- b A group's own sense of identity
- c Architecture
- d Food preferences and prescriptions

Choose the **correct** option

- 1 b and d
- 2 a and b
- 3 a, b, c and d
- 4 a, c and d
- 5 b, c and d

[TURN OVER]

QUESTION 30

From the options below, select the term that **CORRECTLY** completes the following statement

The harvest feast (*incwala*) celebrated by the Swazi provides an example of the integration of culture in which the _____ with the office of the king as cultural focal point, forms the basis for the integration with the other aspects of their sociocultural system

- 1 kinship aspect
- 2 military aspect
- 3 political aspect
- 4 judicial aspect

QUESTION 31

Which of the following categories of kin are members of EGO's **patrilineage**?

- 1 Cross-cousins
- 2 Affinal kin
- 3 All members of the nuclear family
- 4 Certain parallel cousins

QUESTION 32

Cognatic descent reckoning is found among the

- 1 Xhosa
- 2 Eskimo and Bushmen
- 3 Pedi (Northern Sotho)
- 4 Southern Ndebele

QUESTION 33

Which of the following **patterns of residence after marriage** is with or near the kin group of the husband?

- 1 Virilocal residence
- 2 Uxorilocal residence
- 3 Neolocal residence
- 4 Avunculocal residence

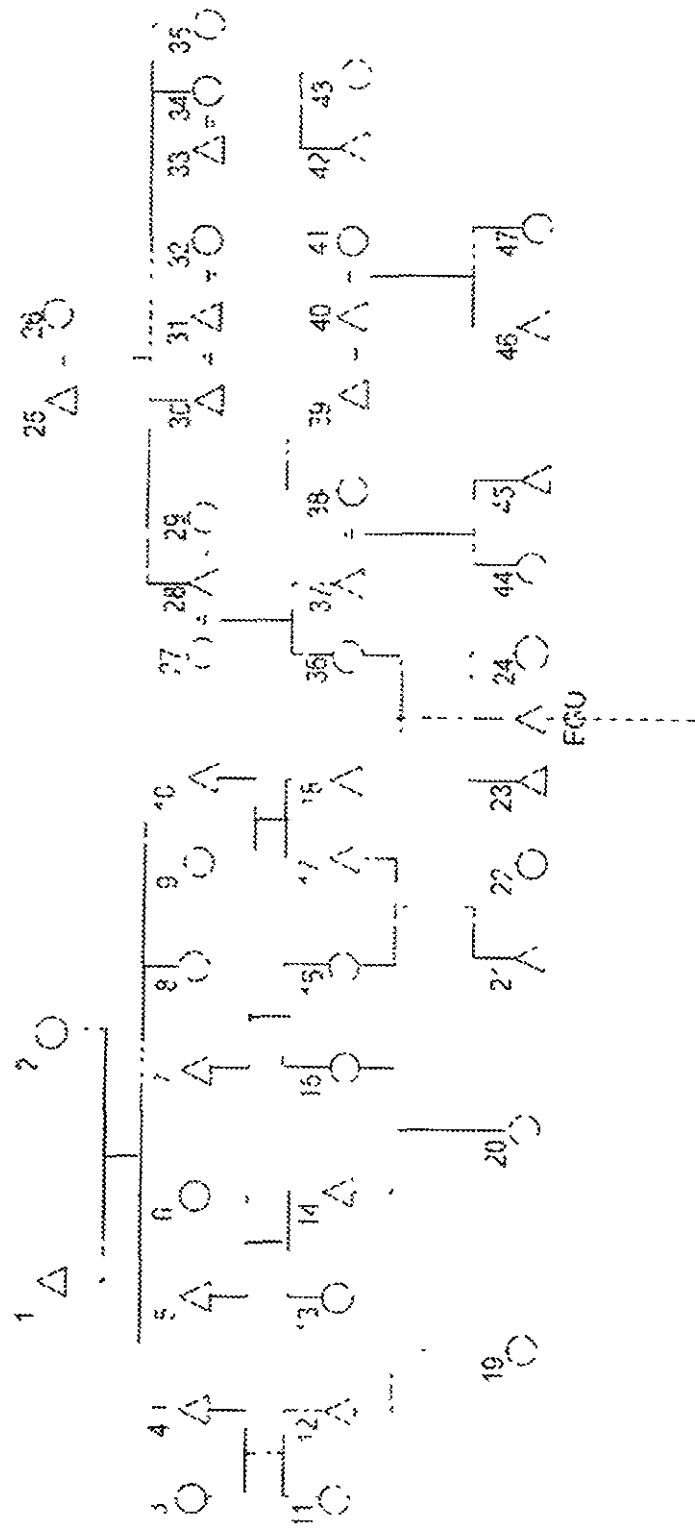
QUESTION 34

Among the Herero of Namibia, matrilineal descent has mainly economic significance because real property is inherited matrilineally, while patrilineal descent has religious significance since access to religious knowledge and resources is determined patrilineally. Such a descent system is known as

- 1 cognatic descent
- 2 parallel descent
- 3 double descent
- 4 agnatic descent
- 5 unilineal descent

[TURN OVER]

ANSWER QUESTIONS 35 TO 42 WITH REFERENCE TO THE FOLLOWING DIAGRAM.



[TURN OVER]

QUESTION 35

In a **matrilineal descent system** EGO would trace his descent through

- 1 36, 27 and 26
- 2 18, 36, 9, 10, 27 and 28
- 3 27, 29 and 36
- 4 36 and 27

QUESTION 36

Choose the option which indicates **38's relationship with 24** correctly

- 1 MoFaBr
- 2 FaSiWi
- 3 FaSiHu
- 4 MoBrWi

QUESTION 37

Which marriage in the diagram is an example of **fraternal polyandry**? The marriage between

- 1 39, 40 and 41
- 2 27, 28 and 29
- 3 33, 34 and 35
- 4 30, 31 and 32

QUESTION 38

Which of the following persons belong to the same **patrilineage** as 12?

- 1 EGO, 10 and 19
- 2 21, 14 and 17
- 3 3, 8, 19 and 20
- 4 1, 8, 10 and 13

QUESTION 39

Who is the **apical ancestor** of the **patrilineage** to whom 21 belongs?

- 1 7
- 2 10
- 3 2
- 4 1

QUESTION 40

Which of the following represents a **cross-cousin marriage**? The union between

- 1 37 and 38
- 2 14 and 15
- 3 12 and 13
- 4 18 and 36

QUESTION 41

Through which of the following persons would EGO trace his descent in a **double descent system**?

- 1 27, 28, 29 and 36
- 2 1 and 2, 9 and 10, 18 and 36
- 3 9, 10 and 18 as well as 27, 28 and 36
- 4 1, 10 and 18 as well as 27 and 36

[TURN OVER]

OCTOBER/NOVEMBER 2011

QUESTION 42

Which marriage in the diagram is an example of **sororal polygyny**? The marriage between

- 1 30, 31 and 32
- 2 39, 40 and 41
- 3 33, 34 and 35
- 4 27, 28 and 29

QUESTION 43

The practice in which a prospective bridegroom is expected to choose a bride from another descent group, but from within the village where he lives, is known as

- 1 lineage exogamy
- 2 local group endogamy
- 3 sororal polygyny
- 4 heterogeneous polyandry

QUESTION 44

An association between two or more independent clans that results from the splitting of a clan refers to a

- 1 moiety
- 2 phratry
- 3 hierarchy of clans
- 4 corporate descent group

QUESTION 45

Which of the following has/have **kinship as a basis of social and other relationships** among Bantu-speaking societies in South Africa?

- a Formation of unilineal descent groups
- b Tracing a person's rank in a patrilineal descent system
- c Choice of employment in rural communities
- d Choice of residence after marriage by a newly married couple
- e Inheritance of material goods

Choose the **correct** combination

- 1 a, c, d
- 2 a, b, c, d, e
- 3 a, b, d, e
- 4 b, c, d
- 5 b, c, d, e

QUESTION 46

What term is used to describe a form of secondary marriage where a man has to claim his deceased wife's sister as a substitute?

- 1 Ghost marriage
- 2 Polyandry
- 3 Sororate
- 4 Levirate

[TURN OVER]

QUESTION 47

Heterogeneous polyandry refers to the marriage of

- 1 one woman to two brothers
- 2 one woman to two unrelated men
- 3 one man to two sisters
- 4 one man to two unrelated women

QUESTION 48

Which of the following is **NOT** an element present in religion?

- 1 Symbols to which the followers of a religion attach a particular value
- 2 Particular beliefs or conceptions about humankind and its origin
- 3 Various acts that are performed out of respect for the supernatural
- 4 Perceptions of the supernatural that can be proved emphatically and experimentally

QUESTION 49

Religion as distinguished from magic is associated with

- 1 an impersonal power and an attitude of dependence
- 2 personalised spiritual beings and an attitude of manipulation
- 3 an impersonal power and an attitude of manipulation
- 4 personalised spiritual beings and an attitude of dependence

QUESTION 50

Which of the following can have religious meaning and may be used for **securing strength, health and good fortune**?

- 1 Totems
- 2 *Umlaza*
- 3 Familiars
- 4 Talismans

QUESTION 51

The most important characteristic distinguishing a **witch** from a **sorcerer** is that a **witch**

- 1 learns his/her evil magical powers
- 2 uses words or actions to harm people
- 3 uses fetishes to perform his/her malevolent practices
- 4 has an inherent (inborn) power to harm people

QUESTION 52

Which of the following use beings with supernatural characteristics and qualities to achieve their own evil purposes?

- 1 Witches
- 2 *Malopo*
- 3 Alien spirits
- 4 Sorcerers
- 5 Diviners

[TURN OVER]

QUESTION 53

Which one of the following religious systems is **NOT** characterised by **monotheistic** beliefs?

- 1 Christianity
- 2 Islam
- 3 Hinduism
- 4 Judaism

QUESTION 54

The following refer to perceptions of the **possible involvement of a deity** in human activities
Match each of the concepts under A with a corresponding description under B

A

- a Atheism
- b Theism
- c Deism

B

- i The deity withdrew after the act of creation
- ii The deity determines the course of human events
- iii The perception that there is no deity

- 1 a i , b ii , c iii
- 2 a iii b i , c ii
- 3 a ii b iii , c i
- 4 a iii , b ii , c i

QUESTION 55

Which one of the following ritual leaders is commanded by the supernatural being to speak on his behalf, "announcing the will of the supernatural"?

- 1 Priest
- 2 Shaman
- 3 Prophet
- 4 Diviner

QUESTION 56

Among Northern Sotho-speakers the **malopo-cult** is closely associated with

- 1 the ancestor spirits
- 2 the Supreme Being
- 3 punishment for wrongs
- 4 myths about their origin

QUESTION 57

Indicate which of the following refer to phenomena that are characteristic of the **malopo-cult**

- 1 Possession - purification - dancing
- 2 Trance - mediumship - familiars
- 3 Purification - fetishism - mediumship
- 4 Shamanism - possession - mana

[TURN OVER]

QUESTION 58

Which one of the following is an important characteristic of the *malopo-cult*?

- 1 The focal point in the treatment of an ill medium is the application of a divination method called *ukuvumisa*
- 2 The cult empowers women and focuses on the needs of female members
- 3 Cult members enjoy a higher status than traditional diviners in society
- 4 Men still take the final decisions in ritual affairs

QUESTION 59

Spirits of deceased senior traditional leaders inhabit bushes while there are other spirits who live in rivers and lakes. The large waterpool below the Phiphidi Falls is believed to be inhabited by the ancestral spirits of the Ngoni and they can be heard dancing under the water. These beliefs apply to

- 1 Venda-speaking people
- 2 Zulu-speaking people
- 3 Northern Sotho-speaking people
- 4 Xhosa-speaking people

QUESTION 60

First decide whether Statements A, B and C which relate to the **meaning of rituals** are **CORRECT** or **INCORRECT** and then choose the **CORRECT** option from those given below

Statement A

Rituals contain a symbolic element

Statement B

Water is associated with coolness and purification

Statement C

The purpose of rituals may be the establishment, maintenance or restoration of relations with the supernatural

- 1 Only Statements A and B are correct
- 2 Only Statements A and C are correct
- 3 Only Statement A is correct
- 4 Only Statement B is correct
- 5 Statements A, B and C are correct

TOTAL [60]

[TURN OVER]

PART 1 (GENERAL/ALGEMEEN) DEEL 1

STUDY UNIT e.g. PSY100-X
 STUDIE-EENHEID by PSY100-X

1									
---	--	--	--	--	--	--	--	--	--

PAPER NUMBER
 VRAESTELNOMMER

2									
---	--	--	--	--	--	--	--	--	--

STUDENT NUMBER STUDENTENOMMER									
6									
7									
8									
9									
0									
1									
2									
3									
4									
5									
6									
7									
8									
9									

INITIALS AND SURNAME
 VOORLETTERS EN VAN

DATE OF EXAMINATION
 DATUM VAN EKSAMEN

EXAMINATION CENTRE (E.G. PRETORIA)
 EKSAMENSENTRUM (BY PRETORIA)

UNIQUE PAPER NO UNIEKE VRAESTEL NR									
8									
9									
0									
1									
2									
3									
4									
5									
6									
7									
8									
9									

For use by examination invigilator
 Vir gebruik deur eksamenopsiener

- IMPORTANT**
- 1 USE ONLY AN HB PENCIL TO COMPLETE THIS SHEET
 - 2 MARK LIKE THIS ➡
 - 3 CHECK THAT YOUR INITIALS AND SURNAME HAS BEEN FILLED IN CORRECTLY
 - 4 ENTER YOUR STUDENT NUMBER FROM LEFT TO RIGHT
 - 5 CHECK THAT YOUR STUDENT NUMBER HAS BEEN FILLED IN CORRECTLY
 - 6 CHECK THAT THE UNIQUE NUMBER HAS BEEN FILLED IN CORRECTLY
 - 7 CHECK THAT ONLY ONE ANSWER PER QUESTION HAS BEEN MARKED
 - 8 DO NOT FOLD
- BELANGRIK**
- 1 GEBUIK SLEGS N HB-POTLOOD OM HIERDIE BLAD TE VOLTUO
 - 2 MERK AS VOLG ➡
 - 3 KONTROLEER DAT U VOORLETTERS EN VAN REG INGEVUL IS
 - 4 VUL U STUDENTENOMMER VAN LINKS NA REGS IN
 - 5 KONTROLEER DAT U DIE KORREKTE STUDENTENOMMER VERSTREK HET
 - 6 KONTROLEER DAT DIE UNIEKE NOMMER REG INGEVUL IS
 - 7 MAAK SEKER DAT NET EEN ALTERNATIEF PER VRAAG GEMERK IS
 - 8 MOENIE VOU NIE

PART 2 (ANSWERS/ANTWOORDE) DEEL 2

1	1) 2) 3) 4) 5)	36	1) 2) 3) 4) 5)	71	1) 2) 3) 4) 5)	106	1) 2) 3) 4) 5)
2	1) 2) 3) 4) 5)	37	1) 2) 3) 4) 5)	72	1) 2) 3) 4) 5)	107	1) 2) 3) 4) 5)
3	1) 2) 3) 4) 5)	38	1) 2) 3) 4) 5)	73	1) 2) 3) 4) 5)	108	1) 2) 3) 4) 5)
4	1) 2) 3) 4) 5)	39	1) 2) 3) 4) 5)	74	1) 2) 3) 4) 5)	109	1) 2) 3) 4) 5)
5	1) 2) 3) 4) 5)	40	1) 2) 3) 4) 5)	75	1) 2) 3) 4) 5)	110	1) 2) 3) 4) 5)
6	1) 2) 3) 4) 5)	41	1) 2) 3) 4) 5)	76	1) 2) 3) 4) 5)	111	1) 2) 3) 4) 5)
7	1) 2) 3) 4) 5)	42	1) 2) 3) 4) 5)	77	1) 2) 3) 4) 5)	112	1) 2) 3) 4) 5)
8	1) 2) 3) 4) 5)	43	1) 2) 3) 4) 5)	78	1) 2) 3) 4) 5)	113	1) 2) 3) 4) 5)
9	1) 2) 3) 4) 5)	44	1) 2) 3) 4) 5)	79	1) 2) 3) 4) 5)	114	1) 2) 3) 4) 5)
10	1) 2) 3) 4) 5)	45	1) 2) 3) 4) 5)	80	1) 2) 3) 4) 5)	115	1) 2) 3) 4) 5)
11	1) 2) 3) 4) 5)	46	1) 2) 3) 4) 5)	81	1) 2) 3) 4) 5)	116	1) 2) 3) 4) 5)
12	1) 2) 3) 4) 5)	47	1) 2) 3) 4) 5)	82	1) 2) 3) 4) 5)	117	1) 2) 3) 4) 5)
13	1) 2) 3) 4) 5)	48	1) 2) 3) 4) 5)	83	1) 2) 3) 4) 5)	118	1) 2) 3) 4) 5)
14	1) 2) 3) 4) 5)	49	1) 2) 3) 4) 5)	84	1) 2) 3) 4) 5)	119	1) 2) 3) 4) 5)
15	1) 2) 3) 4) 5)	50	1) 2) 3) 4) 5)	85	1) 2) 3) 4) 5)	120	1) 2) 3) 4) 5)
16	1) 2) 3) 4) 5)	51	1) 2) 3) 4) 5)	86	1) 2) 3) 4) 5)	121	1) 2) 3) 4) 5)
17	1) 2) 3) 4) 5)	52	1) 2) 3) 4) 5)	87	1) 2) 3) 4) 5)	122	1) 2) 3) 4) 5)
18	1) 2) 3) 4) 5)	53	1) 2) 3) 4) 5)	88	1) 2) 3) 4) 5)	123	1) 2) 3) 4) 5)
19	1) 2) 3) 4) 5)	54	1) 2) 3) 4) 5)	89	1) 2) 3) 4) 5)	124	1) 2) 3) 4) 5)
20	1) 2) 3) 4) 5)	55	1) 2) 3) 4) 5)	90	1) 2) 3) 4) 5)	125	1) 2) 3) 4) 5)
21	1) 2) 3) 4) 5)	56	1) 2) 3) 4) 5)	91	1) 2) 3) 4) 5)	126	1) 2) 3) 4) 5)
22	1) 2) 3) 4) 5)	57	1) 2) 3) 4) 5)	92	1) 2) 3) 4) 5)	127	1) 2) 3) 4) 5)
23	1) 2) 3) 4) 5)	58	1) 2) 3) 4) 5)	93	1) 2) 3) 4) 5)	128	1) 2) 3) 4) 5)
24	1) 2) 3) 4) 5)	59	1) 2) 3) 4) 5)	94	1) 2) 3) 4) 5)	129	1) 2) 3) 4) 5)
25	1) 2) 3) 4) 5)	60	1) 2) 3) 4) 5)	95	1) 2) 3) 4) 5)	130	1) 2) 3) 4) 5)
26	1) 2) 3) 4) 5)	61	1) 2) 3) 4) 5)	96	1) 2) 3) 4) 5)	131	1) 2) 3) 4) 5)
27	1) 2) 3) 4) 5)	62	1) 2) 3) 4) 5)	97	1) 2) 3) 4) 5)	132	1) 2) 3) 4) 5)
28	1) 2) 3) 4) 5)	63	1) 2) 3) 4) 5)	98	1) 2) 3) 4) 5)	133	1) 2) 3) 4) 5)
29	1) 2) 3) 4) 5)	64	1) 2) 3) 4) 5)	99	1) 2) 3) 4) 5)	134	1) 2) 3) 4) 5)
30	1) 2) 3) 4) 5)	65	1) 2) 3) 4) 5)	100	1) 2) 3) 4) 5)	135	1) 2) 3) 4) 5)
31	1) 2) 3) 4) 5)	66	1) 2) 3) 4) 5)	101	1) 2) 3) 4) 5)	136	1) 2) 3) 4) 5)
32	1) 2) 3) 4) 5)	67	1) 2) 3) 4) 5)	102	1) 2) 3) 4) 5)	137	1) 2) 3) 4) 5)
33	1) 2) 3) 4) 5)	68	1) 2) 3) 4) 5)	103	1) 2) 3) 4) 5)	138	1) 2) 3) 4) 5)
34	1) 2) 3) 4) 5)	69	1) 2) 3) 4) 5)	104	1) 2) 3) 4) 5)	139	1) 2) 3) 4) 5)
35	1) 2) 3) 4) 5)	70	1) 2) 3) 4) 5)	105	1) 2) 3) 4) 5)	140	1) 2) 3) 4) 5)

Specimen only

MARK READING SHEET INSTRUCTIONS

Your mark reading sheet is marked by computer and should therefore be filled in thoroughly and correctly

USE ONLY AN HB PENCIL TO COMPLETE YOUR MARK READING SHEET

PLEASE DO NOT FOLD OR DAMAGE YOUR MARK READING SHEET

Consult the illustration of a mark reading sheet on the reverse of this page and follow the instructions step by step when working on your sheet

Instruction numbers ① to ⑩ refer to spaces on your mark reading sheet which you should fill in as follows

- ① Write your paper code in these eight squares, for instance

P	S	Y	1	0	0	-	X
---	---	---	---	---	---	---	---

- ② The paper number pertains only to first-level courses consisting of two papers

WRITE

0	1
---	---

 for the first paper and

0	2
---	---

 for the second. If only one paper, then leave blank

- ③ Fill in your initials and surname

- ④ Fill in the date of the examination

- ⑤ Fill in the name of the examination centre

- ⑥ WRITE the digits of your student number HORIZONTALLY (from left to right). Begin by filling in the first digit of your student number in the first square on the left, then fill in the other digits, each one in a separate square

- ⑦ In each vertical column mark the digit that corresponds to the digit in your student number as follows [-]

- ⑧ WRITE your unique paper number HORIZONTALLY

NB Your unique paper number appears at the top of your examination paper and consists only of digits (e.g. 403326)

- ⑨ In each vertical column mark the digit that corresponds to the digit number in your unique paper number as follows [-]

- ⑩ Question numbers 1 to 140 indicate corresponding question numbers in your examination paper. The five spaces with digits 1 to 5 next to each question number indicate an alternative answer to each question. The spaces of which the number correspond to the answer you have chosen for each question and should be marked as follows [-]

◆ For official use by the invigilator. Do not fill in any information here