

APY1501

(478665)

October/November 2017

**THE ANTHROPOLOGICAL STUDY OF CULTURE IN A MULTICULTURAL
CONTEXT**

Duration 2 Hours

60 Marks

EXAMINERS

FIRST

MR GH MAREE

SECOND

DR IE MARAIS

Closed book examination

This examination question paper remains the property of the University of South Africa and may not be removed from the examination venue

This paper consists of **20** pages **PLUS** instructions for the completion of a mark reading sheet

PLEASE COMPLETE THE ATTENDANCE REGISTER ON THE BACK PAGE, TEAR OFF AND HAND TO THE INVIGILATOR

- 1 Answer **ALL** the questions **FILL IN YOUR ANSWERS ON THE MARK READING SHEET**
- 2 **ONLY ONE** option per multiple choice questions must be selected **NO MARKS** will be given if more than one option is included in an answer
- 3 All multiple choice questions count **ONE MARK PER QUESTION**

QUESTION 1

Select the option that **CORRECTLY** completes the following statement

Sociocultural anthropologists focus on the

- 1 relation between language and the other aspects of the life of a society
- 2 lifestyles of the rich diversity of societies as they are found worldwide
- 3 influence of biological and hereditary characteristics on behaviour of members of a society
- 4 material remains of societies which are collected during excavation of sites where people once lived

QUESTION 2

Select the option that **CORRECTLY** completes the following statement

Initially what **distinguished** anthropology from sociology was that

- 1 anthropology mainly studied "preliterate" communities
- 2 sociology focussed on the study of "pre-industrial" communities
- 3 anthropology used questionnaires for the purpose of research
- 4 sociology used qualitative research strategies to study people

QUESTION 3

Select the **INCORRECT** statement

Linguistic anthropologists

- 1 initially studied the historical development of unwritten languages of non-western societies
- 2 study societies to gain an understanding of how cultural phenomena are expressed verbally
- 3 mainly focus attention on the evolution of languages in prehistorical societies
- 4 study the way in which language is used in different social contexts

QUESTION 4

Within the "four fields" paradigm, sociocultural anthropology and archaeology are closely related in that they both uncover aspects of human culture. Which of the following statements is **CORRECT**?

- 1 Sociocultural anthropologists uncover aspects about the prehistory of human populations by looking at material objects hidden beneath the earth's surface
- 2 Archaeologists study past living conditions and changes that occurred in human populations during prehistoric times
- 3 Sociocultural anthropologists focus on the culture of societies to establish their inferiority and superiority in relation to each other
- 4 Archaeologists focus on the influence of biological and demographic factors on the behaviour of members of a society

QUESTION 5

Select the option that **CORRECTLY** completes the following statement

A **holistic approach** to the study of culture means that anthropologists

- 1 attempt to obtain an overall impression of the development of culture
- 2 draw generalisations about the human condition
- 3 study the cultural systems of societies within a global cultural pattern
- 4 study all facets of human life, including the environmental factors to which people must adapt for survival

QUESTION 6

The original site for fieldwork in anthropology was the remote 'tribal' village. This narrow conception of 'field' has since been broadened. Which of the following are **now** considered **anthropological research sites** as well?

- a Drug dealers
- b Factory workers
- c Institutional settings
- d Religious movements

Select the **CORRECT** combination

- 1 a and b
- 2 a, b and d
- 3 c and d
- 4 a, b, c and d

QUESTION 7

Select the option that **CORRECTLY** completes the following statement

Participant observation means that an anthropologist should

- 1 participate in the sense that he/she should commit his/her thoughts and emotions to the real-world fieldwork setting, and record his/her observations in an objective, scientific and systematic manner
- 2 become an active participant in the daily life of the community concerned and report on his/her experiences from his/her own cultural perspective
- 3 be a careful observer of the customs and daily life of a community to enable him/her to understand and record the relevant activities and events
- 4 observe more than participate in a conscious attempt to obtain concise, objective answers to research questions to enable anthropological theorisation

QUESTION 8

Select the option that **CORRECTLY** completes the following statement

Anthropological information that has been collected by means of the ethnographic method will be regarded as a more **meaningful** and **accurate** representation of peoples' sociocultural systems when an anthropologist has

- 1 representative statistical surveys that verify the information
- 2 made systematic and relevant cross-cultural comparisons of the information
- 3 interviewed a number of research participants and has participated in relevant cultural activities
- 4 applied the emic and etic research approaches during his/her fieldwork

QUESTION 9

Select the option that **CORRECTLY** completes the following statement

If an excessively **cultural relativistic** approach is followed in anthropology

- 1 cultural practices that have a harmful impact on a society may not be questioned
- 2 the researcher might adopt an ethnocentric approach to the study of people
- 3 statistical data relevant to an investigation might be misinterpreted
- 4 the researcher's beliefs may influence the results of his/her investigation

QUESTION 10

Which one of the options **best** illustrates an **etic approach** to the study of the Karretjie People?

- 1 A researcher receiving the credit for publications on the Karretjie People without giving credit to his/her research participants' intellectual property
- 2 A researcher publishing information on the subjective experiences of the Karretjie People, using only their own words and phrases
- 3 A researcher presenting stereotypes of the Karretjie People as the truth, such as that they are all sly and shifty
- 4 A researcher presenting only his/her own interpretation of the information obtained from the Karretjie People

QUESTION 11

Since the 1970s anthropologists have increasingly contemplated their own role and experiences in the field. Which one of the following developments is **NOT** considered to be part of this contemplation?

- 1 Multivocality
- 2 Reflexivity
- 3 Cultural relativism
- 4 Narrative ethnography

QUESTION 12

Which one of the following **best** illustrates how an application of the concept of cultural relativism influences the work of anthropologists?

- 1 An anthropologist determines which one of two social groups has developed a more effective approach to combating crime
- 2 An anthropologist compares the social structure and social behaviour of different social groups
- 3 An anthropologist interprets the behaviour of people in terms of the sociocultural context in which the behaviour is found
- 4 An anthropologist demonstrates how a social group's culture has been influenced by other social groups with which it has been in contact

QUESTION 13

Select the option that **CORRECTLY** completes the following statement

All of the following perspectives or approaches are characteristic of anthropology, **EXCEPT**

- 1 a holistic approach which takes the entire sociocultural and environmental settings of a human population, as well as the dynamic interaction between them into account
- 2 an experimental method of research which enables anthropologists to test human subjects under laboratory conditions to determine their strengths and weaknesses
- 3 a worldwide scope that is not bound by time
- 4 a comparative approach that brings similarities and differences between human populations to the fore

QUESTION 14

Read the following paragraph and then select the term that **CORRECTLY** completes the statement below

With the colonisation of Africa, the European colonial governments regarded their own sociocultural systems as "civilised" and superior to those of the Africans and in many cases initiated concerted processes of Christianisation, education, and more pertinently, general sociocultural change

This paragraph illustrates the anthropological notion of

- 1 subjectivity
- 2 reflexivity
- 3 relativism
- 4 ethnocentrism

QUESTION 15

De Jongh (2010) applies the anthropological method to consider issues regarding formal education which the Karretjie People faced. After making an intervention to provide a sustainable process for the provision of holistic education, he draws a number of inferences. Which of the following reflect these inferences?

- a Participatory research should be employed to find solutions to rural poverty and its accompanying educational challenges
- b It is necessary to make case- and context-specific decisions to address educational challenges in rural settings
- c Government alone should be responsible for implementing solutions to educational challenges in rural areas because ultimately only it has the power to do anything
- d It is necessary to understand who the people are and how they live for solutions to be effective

Select the **CORRECT** combination

- 1 a, b, c and d
- 2 a and c
- 3 b, c and d
- 4 a, b and d

QUESTION 16

Which of the following is **NOT** applicable to the anthropologist's involvement in development projects?

- 1 Providing technical information on the geographical area targeted for the development project
- 2 Doing social impact studies to avoid disrupting the local community during the implementation of a project
- 3 Co-operating with other scientists as part of a multidisciplinary team which is planning a development project
- 4 Acting as a mediator between the local community and the planners of a project

QUESTION 17

Select the option that **CORRECTLY** completes the following statement

The species _____ lived in camps of piled stone or bushes, had a highly developed toolkit and, possibly, the use of fire

- 1 *Australopithecus afarensis*
- 2 *Homo erectus*
- 3 *Australopithecus africanus*
- 4 *Homo habilis*

QUESTION 18

Select the option that **CORRECTLY** completes the following statement

The species _____ developed speech and language, marriage and family life

- 1 *Homo sapiens*
- 2 *Homo erectus*
- 3 *Homo neanderthalensis*
- 4 *Homo habilis*
- 5 All of the above

QUESTION 19

Select the option that **CORRECTLY** completes the following statement

Kinesics

- 1 includes gestures, facial expressions, calls, exclamations and manner of speech
- 2 is the "science" of body language
- 3 is universally the same irrespective of people's spoken language
- 4 is about *what* is said instead of *how* it is said

QUESTION 20

Many human population groups around the world that are physically different, also display different social behaviours. Which of the following explains this phenomenon?

- a People learn culture as they grow up. For instance, the children of the Karretjie People acquire knowledge peculiar to their lifestyle and environment within the family unit
- b Different racial groups have different social behaviours
- c Recent studies into the genes of people have determined that specific genes are responsible for certain behaviours
- d Inequality plays a role. In South Africa, for instance, black people have historically had unequal access to certain facilities. The consequence of this is that they participate less frequently than white people in sports such as swimming despite the fact they are the numerical majority

Select the **CORRECT** combination

- 1 b and d
- 2 a and d
- 3 b and c
- 4 a, b, c and d

QUESTION 21

Select the option that **CORRECTLY** completes the following statement

The concept of **race**

- 1 is frequently used by anthropologists to explain high crime rates and substance abuse among particular social groups
- 2 entails that a particular race has exclusive possession of particular variants of genes
- 3 is a sociocultural and not a biological construct because human 'races' cannot be defined biologically
- 4 explains why some people are innately inferior to others

QUESTION 22

Which one of the options best explains the notion of **human agency** in sociocultural change?

- 1 The rules, norms and accepted patterns of behaviour in a community that constrain change
- 2 Change that is the result of forces beyond the control of people
- 3 Change or adaptations to change that individuals initiate in order to survive
- 4 Change that is the result of influences from beyond a community or society

QUESTION 23

Female genital mutilation is a way of permanently marking the body Which of the following are **CORRECT** with regard to this practice?

- a Is often enforced by older women
- b Is done for hygienic reasons
- c Is done to deny sexual pleasure
- d Comprises primarily the excision/removal of the clitoris

Select the **CORRECT** combination

- 1 a and c
- 2 a and d
- 3 b, c and d
- 4 a, c and d

QUESTION 24

Select the **CORRECT** definition for the following concept

Enculturation

- 1 refers to the human ability and capacity to imitate and learn from the environment
- 2 means that human behaviour is both inherited or instinctive and learned
- 3 is the way culture is transmitted or carried over from one generation to the next
- 4 refers to the acquisition of knowledge through informal learning activities only

QUESTION 25

Select the option that **CORRECTLY** completes the following statement

The British anthropologist, Sir Edward Tylor, who formulated one of the first definitions of the concept of culture from an anthropological perspective, defined it as

- 1 that complex whole which includes all human institutions and ways of being acquired by a person as a member of society
- 2 the ideas, thought patterns, values, attitudes and perceptions of members of society that direct and influence their behaviour
- 3 sets of relationships and behaviour patterns which are established by interacting individuals in a particular sociocultural context
- 4 the works and practices of intellectual and especially artistic activity

QUESTION 26

Select the option that **CORRECTLY** completes the following statement

For behaviour to be regarded as 'cultural', it must be

- 1 characteristic of only one social group
- 2 considered to be appropriate by a significant number of people in a group
- 3 practised by every single person in a group
- 4 learned from family and friends

QUESTION 27

The word culture has many different meanings. Some academics, including anthropologists, suggest that it is no longer a valid concept and should not be used in scholarly works. According to Eriksen (2004), which of the following is a **basic objection** to the use of the **concept of culture**?

- 1 Not all people have culture
- 2 People are different and the concept of culture encourages the view that they are similar
- 3 The concept of culture highlights too many complexities in society and makes it difficult for academics to do their work
- 4 The plural of culture (cultures) divides human beings in that it emphasises differences between groups of people

QUESTION 28

Select the option that **CORRECTLY** completes the following statement

The appointment or recognition of a leader or an authoritative body which makes rules and laws and which is accepted and obeyed gives rise to a community's

- 1 social system
- 2 legal system
- 3 political system
- 4 military system

QUESTION 29

Which of the statements regarding **name as a symbol of identity** is/are **CORRECT**?

- a Through naming a group acknowledges a child's birthright
- b Personal names are regarded as important means of self-definition
- c In Spain, a woman does not take her husband's surname at marriage
- d Without a name an individual has no identity, no self

Select the **CORRECT** option

- 1 d
- 2 a and b
- 3 a, b and c
- 4 a, b, c and d

QUESTION 30

According to Joshi (2009) '**cyberspace**' is a new arena where the idea of identity is playing itself out. Which of the following statements, in her view, make '**cyberspace**' different from other arenas where identity can be studied?

- a While the internet is a new platform on which to communicate it has not introduced societies to a different way of performing identity
- b Self-identity can be explored without the constraints of 'real life' boundaries
- c Social networking is an example where the self can be explored in an altered form
- d Social science research cannot be conducted in 'cyberspace' because it is not a real 'place'

Select the **CORRECT** combination

- 1 a and d
- 2 a, c and d
- 3 b and c
- 4 b and d

QUESTION 31

Which of the statements regarding **anthropology and gender** is/are **CORRECT**?

- a Anthropology focuses on how ideas about gender are constructed in different sociocultural contexts
- b Gender differences are located in the physical body, therefore anthropology does not distinguish between sexed bodies and socially constructed genders
- c Individuals' gender construction is viewed as occurring separately from the influence of the group's perceptions of gender
- d Gender identity is acquired through socialisation and enculturation, but is also shaped by a person's lived experiences

Select the **CORRECT** option

- 1 d
- 2 a and d
- 3 b and d
- 4 a and c

QUESTION 32

Which of the following may be used to distinguish an **ethnic group**?

- a A common geographical area
- b A group's own sense of identity
- c A common language
- d Songs

Select the **CORRECT** combination

- 1 b and d
- 2 c and d
- 3 a, b, c and d
- 4 b, c and d
- 5 a, b and c

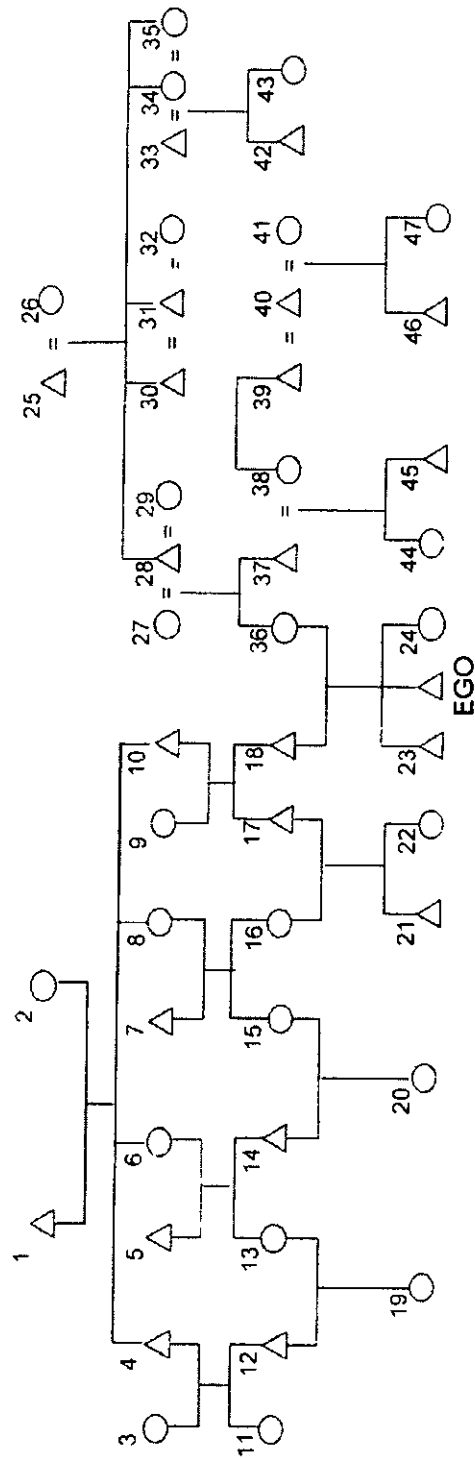
QUESTION 33

Select the option that **CORRECTLY** completes the following statement

When anthropologists conduct research they often study how people organise their relationships in society. One of the most basic ways to do this is to look at the society's

- 1 political organisation
- 2 kinship system
- 3 judicial system
- 4 religious system

ANSWER QUESTIONS 34 TO 41 WITH REFERENCE TO THE FOLLOWING DIAGRAM



QUESTION 34

Who is the **apical ancestor of the matrilineage** to whom 23 belongs?

- 1 26
- 2 25
- 3 27
- 4 29

QUESTION 35

Which of the following indicates the **relationship of 15 and 9 CORRECTLY?**

- 1 FaBrWi
- 2 MoSiHu
- 3 FaSiDa
- 4 MoBrWi

QUESTION 36

Through whom would Ego trace descent in a **cognatic descent system?**

- 1 1, 4, 5, 7 and 10 as well as 25, 28, 30, 31 and 34
- 2 36, 37, 27, 28, 29, 25 and 26
- 3 18, 10, 9, 1 and 2 as well as 36, 28, 27, 25 and 26
- 4 18, 10, and 1 as well as 36, 27, 29 and 26

QUESTION 37

Who would exercise authority over **EGO** and **24** if they are members of a group with a **matrilineal descent system?**

- 1 18
- 2 37
- 3 27
- 4 36

QUESTION 38

From the options below, select the **relationship** that **CORRECTLY** completes the following statement

38 is a(n) of **43**

- 1 parallel-cousin
- 2 matrilineal kin
- 3 cross-cousin
- 4 affine

QUESTION 39

Which of the following persons is a **cross-cousin of 20**?

- 1 21
- 2 19
- 3 EGO
- 4 11

QUESTION 40

Which of the following represents a **parallel-cousin marriage**? The union between

- 1 31 and 32
- 2 16 and 17
- 3 12 and 13
- 4 14 and 15

QUESTION 41

Select the option that **CORRECTLY** completes the following statement

If **EGO** and **24** belong to different descent groups, their system of descent reckoning is known as

- 1 cognatic or bilateral
- 2 double
- 3 matrilineal
- 4 parallel
- 5 patrilineal

QUESTION 42

Which one of the following statements regarding the difference between clans and lineages is **CORRECT**?

- 1 Clans are usually endogamous units while lineages are exogamous units
- 2 Clans are only found among rural communities whereas lineages are found throughout the world
- 3 Clans are based on fictive descent while lineages are based on real descent
- 4 Clans are generally smaller in numbers than lineages

QUESTION 43

Match the concept in Column A to the corresponding description in Column B and then select the **CORRECT** option

COLUMN A		COLUMN B	
a	Caste endogamy	i	May take the form of parallel-cousin marriage or cross-cousin marriage
b	Alliance endogamy	ii	Among the Ashanti of Ghana, taking a marriage partner from outside one's own village is considered unsafe
c	Local group endogamy	iii	Found in India and entails the prescription to marry within one's own caste
d	Kin group endogamy	iv	When one is prohibited from marrying within one's own group and at the same time be expected to marry someone from another particular group

- 1 a i, b ii, c iv, d iii
- 2 a iii, b iv, c ii, d i
- 3 a ii, b iv, c i, d iii
- 4 a iii, b i, c iv, d ii

QUESTION 44

Which one of the following applies to a **leviratic union** among indigenous groups in South Africa?

- 1 It is a continuation of a deceased man's marriage by his brother or close male relative
- 2 It is practised by all indigenous groups in South Africa
- 3 A deceased man's marriage must first be dissolved before a leviratic union can be concluded
- 4 It is concluded on behalf of a man who died before he could marry

QUESTION 45

From the options below, select the one that **CORRECTLY** completes the following statement

Clan names

- 1 are inherited from one's mother among Xhosa-speaking people
- 2 are passed on from a woman to her children in patrilineal communities
- 3 may refer to a person or an event in a clan's history
- 4 may be used as people's first names among the Southern Ndebele

QUESTION 46

Select the option that **CORRECTLY** completes the following statement

Anthropologists study **religion**

- 1 to understand a religious system in terms of its meaning for its followers
- 2 in terms of their own standards and value systems
- 3 to make a factual evaluation of the supernatural world
- 4 to distinguish between religion and magic in small-scale communities

QUESTION 47

Select the option that **CORRECTLY** completes the following statement

The view that **religion** originated in response to the universal need to find comfort **in times of crises**, was formulated by

- 1 Emile Durkheim
- 2 Edward Tylor
- 3 Bronislaw Malinowski
- 4 Anthony Wallace

QUESTION 48

Select the option that **CORRECTLY** completes the following statement

The definition of religion as “**belief in spiritual beings**” was formulated by

- 1 Anthony Wallace
- 2 Sigmund Freud
- 3 Melvin Ember
- 4 Edward Tylor

QUESTION 49

Which one of the following concepts represents the idea of the **active involvement of the deity or deities** in the everyday affairs of humans?

- 1 Polytheism
- 2 Monotheism
- 3 Deism
- 4 Atheism
- 5 Theism

QUESTION 50

Different meanings are attached to totemism. Which of the following apply?

Totemism

- a is usually associated with unilineal descent groups
- b may be related to the namegiving of clans and lineages
- c may be closely linked to the well-being of descent groups
- d is usually associated with prohibitions and avoidances (taboos)

Select the **CORRECT** combination

- 1 b and c
- 2 a and d
- 3 b, c and d
- 4 a, b, c and d

QUESTION 51

Select the **CORRECT** option for the following

What is the difference between a **fetish** and an **amulet**?

- 1 A fetish is an object which is used for protection against misfortune while an amulet contains various ingredients by means of which a spirit is induced to dwell in it so that its potency can be evoked
- 2 A fetish is an object to which supernatural powers are ascribed in some societies while an amulet is intended to secure strength, health and good fortune
- 3 A fetish may be used for the purpose of success in war while an amulet is specifically worn as a piece of adornment with which to seduce the opposite sex
- 4 They are the same in terms of composition and style. The difference lies in the context in which they are used. It is called a fetish when the wearer needs protection during a fist fight. It is called an amulet when a spirit is induced to dwell in it to ward off witchcraft

QUESTION 52

Select the option that **CORRECTLY** completes the following statement

When a person is **possessed by a spirit** and **communicates** with other people in a strange voice or language, we refer to this as

- 1 mediumship
- 2 negative possession
- 3 positive possession
- 4 trance

QUESTION 53

Which one of the following statements regarding the **supernatural** is **CORRECT**?

- 1 In South Africa, the idea that illness results from supernatural forces is found only among indigenous communities
- 2 In many languages there is no equivalent for the English term 'supernatural', which indicates that the supernatural does not exist for speakers of such languages
- 3 In terms of a 'western worldview' no clear distinction is made between humans, nature and the supernatural
- 4 In communities around the world, perceptions of the supernatural change over time

QUESTION 54

The most important characteristic distinguishing a **witch** from a **sorcerer** is that a **witch**

- 1 learns his/her evil magical powers
- 2 uses words or actions to harm people
- 3 uses fetishes to perform his/her malevolent practices
- 4 has an inherent (inborn) power to harm people

QUESTION 55

Choose the option that **CORRECTLY** completes the following statement

The person who represents people with a supernatural being with the purpose of maintaining communication between the people and the supernatural being is called a

- 1 priest
- 2 prophet
- 3 diviner
- 4 traditional healer

QUESTION 56

Which one of the following is an **impersonal power** that works in living beings as well as non-living objects?

- 1 *Umlaza*
- 2 *Mana*
- 3 *Umkhondo*
- 4 *Malopo*

QUESTION 57

Which of the following statements regarding **ritual** is/are **CORRECT**?

- a A ritual may be a simple act performed by a single individual, for example confession
- b A ritual that is not approved by a community is not a true ritual
- c An evil act performed by a witch, for example the killing of a neighbour, is not a ritual act
- d The performance of acts which are characteristic of specific rituals is restricted to ritual occasions alone

Select the **CORRECT** option

- 1 a
- 2 a and c
- 3 b and d
- 4 a, b, c and d

QUESTION 58

Which of the following refer to phenomena that are characteristic of the *malopo-cult*?

- 1 Possession - purification - dancing
- 2 Trance - mediumship - familiars
- 3 Purification - fetishism - mediumship
- 4 Shamanism - possession - mana

QUESTION 59

Choose the option that **CORRECTLY** completes the following statement

The **Tamil Hindu in KwaZulu-Natal** believe that

- 1 before people can participate in rituals they must wash their hands, faces and feet
- 2 one cannot become impure merely by touching objects that were touched by impure people
- 3 impurity caused by bodily waste matter may be removed by the goddess Kamaksi, the guardian of the home.
- 4 the images of gods, which are placed on home altars, are the temporary seats of such beings
- 5 1 and 4

QUESTION 60

Select the option that **CORRECTLY** completes the following statement

Religious fundamentalism

- 1 arises when people unfailingly follow the tenets of their religions
- 2 reflects a belief that the principles on which the larger religion is based have been corrupted
- 3 arises when religious devotees insist their states should be secular and are willing to engage in armed conflict if this is not the case
- 4 comprises a ritualistic practice where people from different religions come together to discuss their problems so that a solution can be found

TOTAL: [60]

PART 1 (GENERAL/ALGEMEEN) DEEL 1

STUDY UNIT # 9 PSY100 X
 STUDIE EENHEID BY PSY100-X

INITIALS AND SURNAME
 VOORLETTERS EN VAN

1

--	--	--	--	--	--	--	--	--	--

DATE OF EXAMINATION
 DATUM VAN EKSAMEN

PAPER NUMBER
 VRAESTELNOMMER

EXAMINATION CENTRE (E.G. PRETORIA)
 EKSAMENSENTRUM (BY PRETORIA)

STUDENT NUMBER
 STUDENTENOMMER

UNIQUE PAPER NO.
 UNIEKE VRAESTEL NR

6

8

For use by examination invigilator
 Vir gebruik deur eksamenopsiener

- IMPORTANT**
1. USE ONLY AN HB PENCIL TO COMPLETE THIS SHEET
 2. MARK LIKE THIS
 3. CHECK THAT YOUR INITIALS AND SURNAME HAS BEEN FILLED IN CORRECTLY
 4. ENTER YOUR STUDENT NUMBER FROM LEFT TO RIGHT
 5. CHECK THAT YOUR STUDENT NUMBER HAS BEEN FILLED IN CORRECTLY
 6. CHECK THAT THE UNIQUE NUMBER HAS BEEN FILLED IN CORRECTLY
 7. CHECK THAT ONLY ONE ANSWER PER QUESTION HAS BEEN MARKED
 8. DO NOT FOLD
- BELANGRIK**
1. GEBUIK SLEGS N HB POTLOOD OM HIERDIE BLAD TE VOLTOOI
 2. MERK AS VOLG
 3. KONTROLEER DAT U VOORLETTERS EN VAN REG INGEVUL IS
 4. VUL U STUDENTENOMMER VAN LINKS NA REGS IN
 5. KONTROLEER DAT U DIF KORREKTE STUDENTENOMMER VFRSTREK HET
 6. KONTROLEER DAT DIE UNIEKE NOMMER REG INGEVUL IS
 7. MAAK SEKER DAT NET EEN ALTERNATIEF PER VRAAG GEMERK IS
 8. MOENIE VOU NIE

PART 2 (ANSWERS/ANTWOORDE) DEEL 2

1	a) b) c) d) e)	36	a) b) c) d) e)	71	a) b) c) d) e)	106	a) b) c) d) e)
2	a) b) c) d) e)	37	a) b) c) d) e)	72	a) b) c) d) e)	107	a) b) c) d) e)
3	a) b) c) d) e)	38	a) b) c) d) e)	73	a) b) c) d) e)	108	a) b) c) d) e)
4	a) b) c) d) e)	39	a) b) c) d) e)	74	a) b) c) d) e)	109	a) b) c) d) e)
5	a) b) c) d) e)	40	a) b) c) d) e)	75	a) b) c) d) e)	110	a) b) c) d) e)
6	a) b) c) d) e)	41	a) b) c) d) e)	76	a) b) c) d) e)	111	a) b) c) d) e)
7	a) b) c) d) e)	42	a) b) c) d) e)	77	a) b) c) d) e)	112	a) b) c) d) e)
8	a) b) c) d) e)	43	a) b) c) d) e)	78	a) b) c) d) e)	113	a) b) c) d) e)
9	a) b) c) d) e)	44	a) b) c) d) e)	79	a) b) c) d) e)	114	a) b) c) d) e)
10	a) b) c) d) e)	45	a) b) c) d) e)	80	a) b) c) d) e)	115	a) b) c) d) e)
11	a) b) c) d) e)	46	a) b) c) d) e)	81	a) b) c) d) e)	116	a) b) c) d) e)
12	a) b) c) d) e)	47	a) b) c) d) e)	82	a) b) c) d) e)	117	a) b) c) d) e)
13	a) b) c) d) e)	48	a) b) c) d) e)	83	a) b) c) d) e)	118	a) b) c) d) e)
14	a) b) c) d) e)	49	a) b) c) d) e)	84	a) b) c) d) e)	119	a) b) c) d) e)
15	a) b) c) d) e)	50	a) b) c) d) e)	85	a) b) c) d) e)	120	a) b) c) d) e)
16	a) b) c) d) e)	51	a) b) c) d) e)	86	a) b) c) d) e)	121	a) b) c) d) e)
17	a) b) c) d) e)	52	a) b) c) d) e)	87	a) b) c) d) e)	122	a) b) c) d) e)
18	a) b) c) d) e)	53	a) b) c) d) e)	88	a) b) c) d) e)	123	a) b) c) d) e)
19	a) b) c) d) e)	54	a) b) c) d) e)	89	a) b) c) d) e)	124	a) b) c) d) e)
20	a) b) c) d) e)	55	a) b) c) d) e)	90	a) b) c) d) e)	125	a) b) c) d) e)
21	a) b) c) d) e)	56	a) b) c) d) e)	91	a) b) c) d) e)	126	a) b) c) d) e)
22	a) b) c) d) e)	57	a) b) c) d) e)	92	a) b) c) d) e)	127	a) b) c) d) e)
23	a) b) c) d) e)	58	a) b) c) d) e)	93	a) b) c) d) e)	128	a) b) c) d) e)
24	a) b) c) d) e)	59	a) b) c) d) e)	94	a) b) c) d) e)	129	a) b) c) d) e)
25	a) b) c) d) e)	60	a) b) c) d) e)	95	a) b) c) d) e)	130	a) b) c) d) e)
26	a) b) c) d) e)	61	a) b) c) d) e)	96	a) b) c) d) e)	131	a) b) c) d) e)
27	a) b) c) d) e)	62	a) b) c) d) e)	97	a) b) c) d) e)	132	a) b) c) d) e)
28	a) b) c) d) e)	63	a) b) c) d) e)	98	a) b) c) d) e)	133	a) b) c) d) e)
29	a) b) c) d) e)	64	a) b) c) d) e)	99	a) b) c) d) e)	134	a) b) c) d) e)
30	a) b) c) d) e)	65	a) b) c) d) e)	100	a) b) c) d) e)	135	a) b) c) d) e)
31	a) b) c) d) e)	66	a) b) c) d) e)	101	a) b) c) d) e)	136	a) b) c) d) e)
32	a) b) c) d) e)	67	a) b) c) d) e)	102	a) b) c) d) e)	137	a) b) c) d) e)
33	a) b) c) d) e)	68	a) b) c) d) e)	103	a) b) c) d) e)	138	a) b) c) d) e)
34	a) b) c) d) e)	69	a) b) c) d) e)	104	a) b) c) d) e)	139	a) b) c) d) e)
35	a) b) c) d) e)	70	a) b) c) d) e)	105	a) b) c) d) e)	140	a) b) c) d) e)

Specimen only

MARK READING SHEET INSTRUCTIONS

Your mark reading sheet is marked by computer and should therefore be filled in thoroughly and correctly

USE ONLY AN HB PENCIL TO COMPLETE YOUR MARK READING SHEET

PLEASE DO NOT FOLD OR DAMAGE YOUR MARK READING SHEET

Consult the illustration of a mark reading sheet on the reverse of this page and follow the instructions step by step when working on your sheet

Instruction numbers ① to ⑩ refer to spaces on your mark reading sheet which you should fill in as follows

- ① Write your paper code in these eight squares, for instance

P	S	Y	1	0	0	-	X
---	---	---	---	---	---	---	---

- ② The paper number pertains only to first-level courses consisting of two papers

WRITE

0	1
---	---

 for the first paper and

0	2
---	---

 for the second. If only one paper, then leave blank

- ③ Fill in your initials and surname
- ④ Fill in the date of the examination
- ⑤ Fill in the name of the examination centre
- ⑥ WRITE the digits of your student number HORIZONTALLY (from left to right). Begin by filling in the first digit of your student number in the first square on the left, then fill in the other digits, each one in a separate square
- ⑦ In each vertical column mark the digit that corresponds to the digit in your student number as follows [-]
- ⑧ WRITE your unique paper number HORIZONTALLY
NB Your unique paper number appears at the top of your examination paper and consists only of digits (e.g. 403326)
- ⑨ In each vertical column mark the digit that corresponds to the digit number in your unique paper number as follows [-]
- ⑩ Question numbers 1 to 140 indicate corresponding question numbers in your examination paper. The five spaces with digits 1 to 5 next to each question number indicate an alternative answer to each question. The spaces of which the number correspond to the answer you have chosen for each question and should be marked as follows [-]

◆ For official use by the invigilator. Do not fill in any information here